

A voice with a long sustain was used to test the sustain compensation feature.

Notes played were ECDE.

Without sustain compensation we can see that each note carried over to the next.

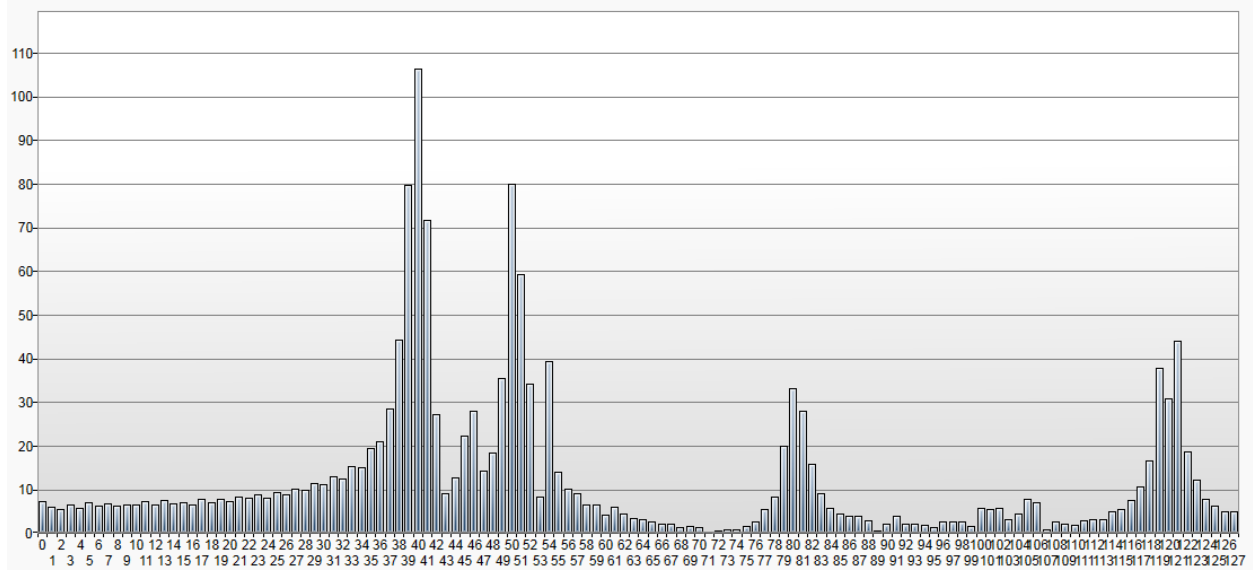


With sustain compensation enabled the notes played were accurately scored.

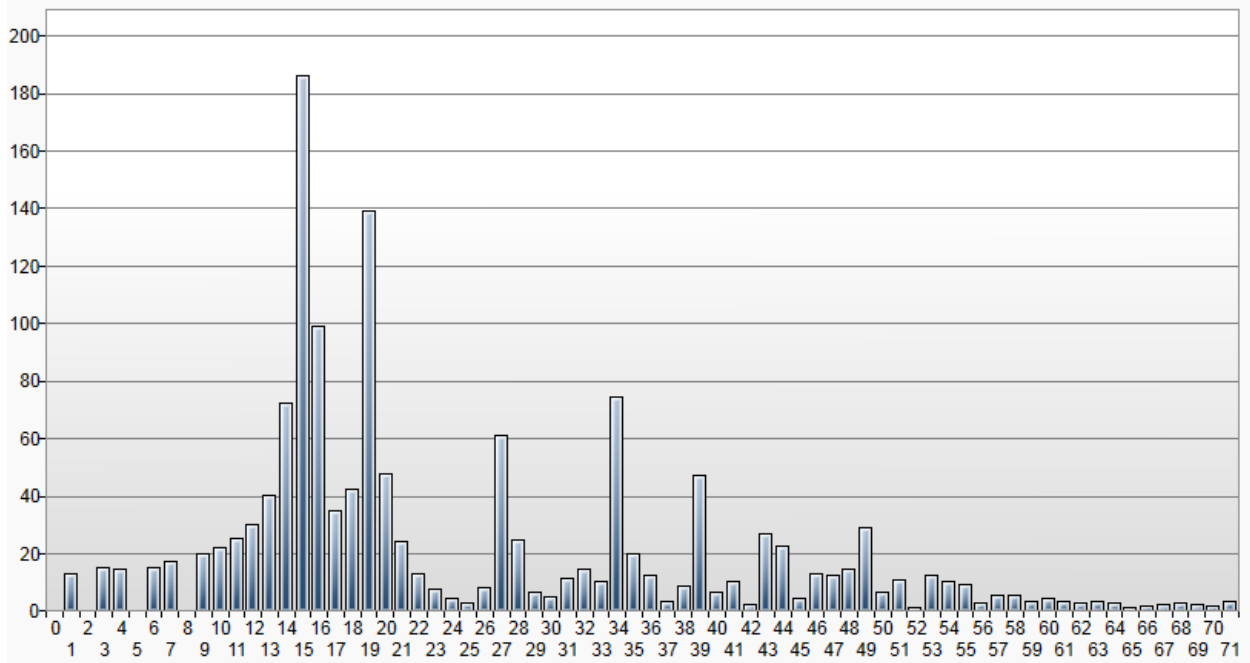


Drilling down to take a closer look at the second note C:

The FFT results show the first peak on C, but also a residual peak on E.



Looking at the note values without sustain compensation enabled we can see that both C and E score enough to be scored.



Reprocessing the same samples with sustain compensation enabled we can see that the value given to the residual E ($E = 19$) is reduced.

